

COMUNE DI TORINO  
VIA FRANCESCO PEIRARCA 4

AREA NORMATIVA R3

INTERVENTO DI COMPLETAMENTO  
ex art. 4 I2 N.U.E.A. del P.R.G.  
in deroga ai disposti dell'Allegato A  
ex art. 26 comma 23bis N.U.E.A. del P.R.G.

**EDIFICIO PLURIPIANO  
DI CIVILE ABITAZIONE  
ED AUTORIMESSA INTERRATA**

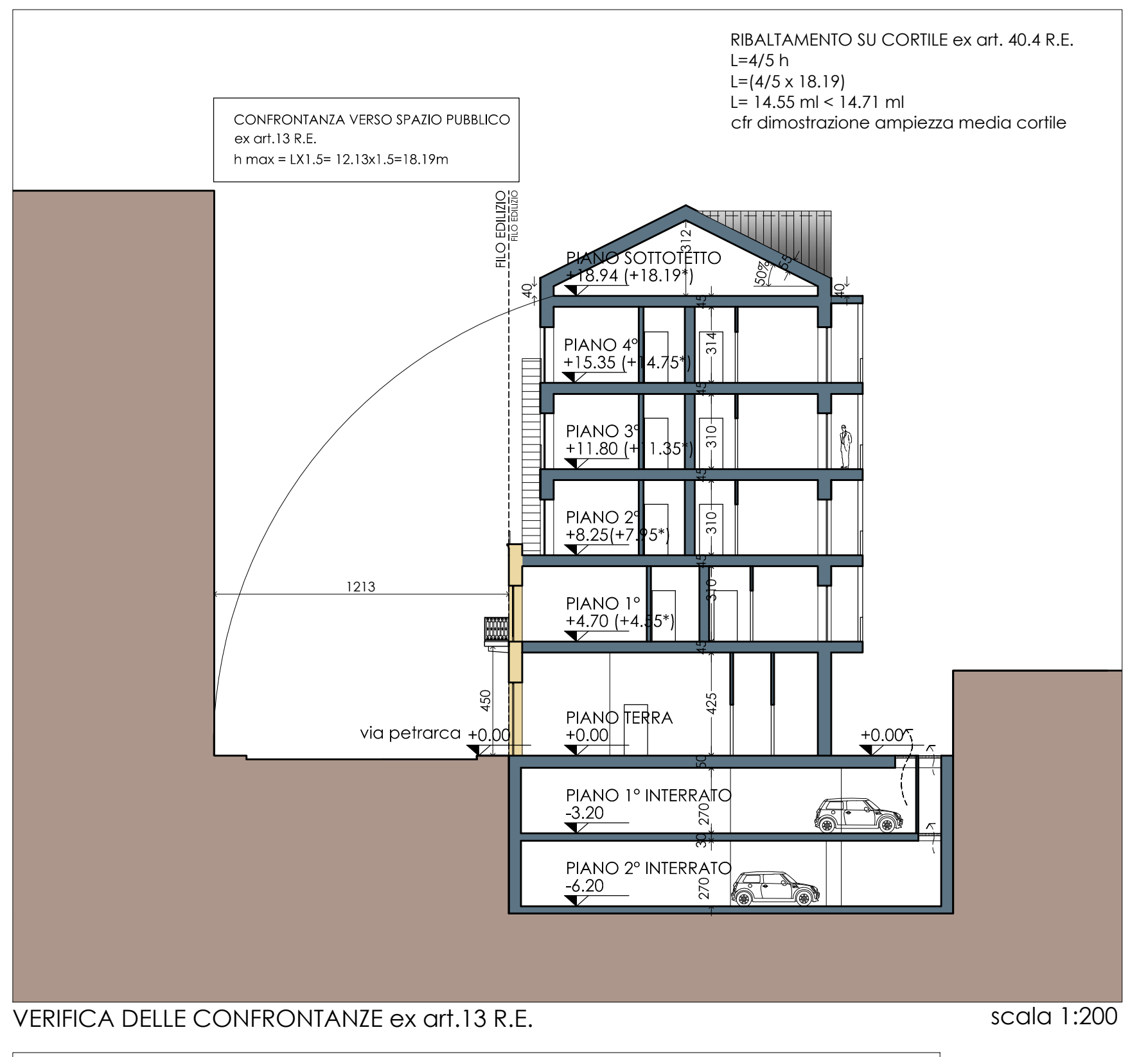
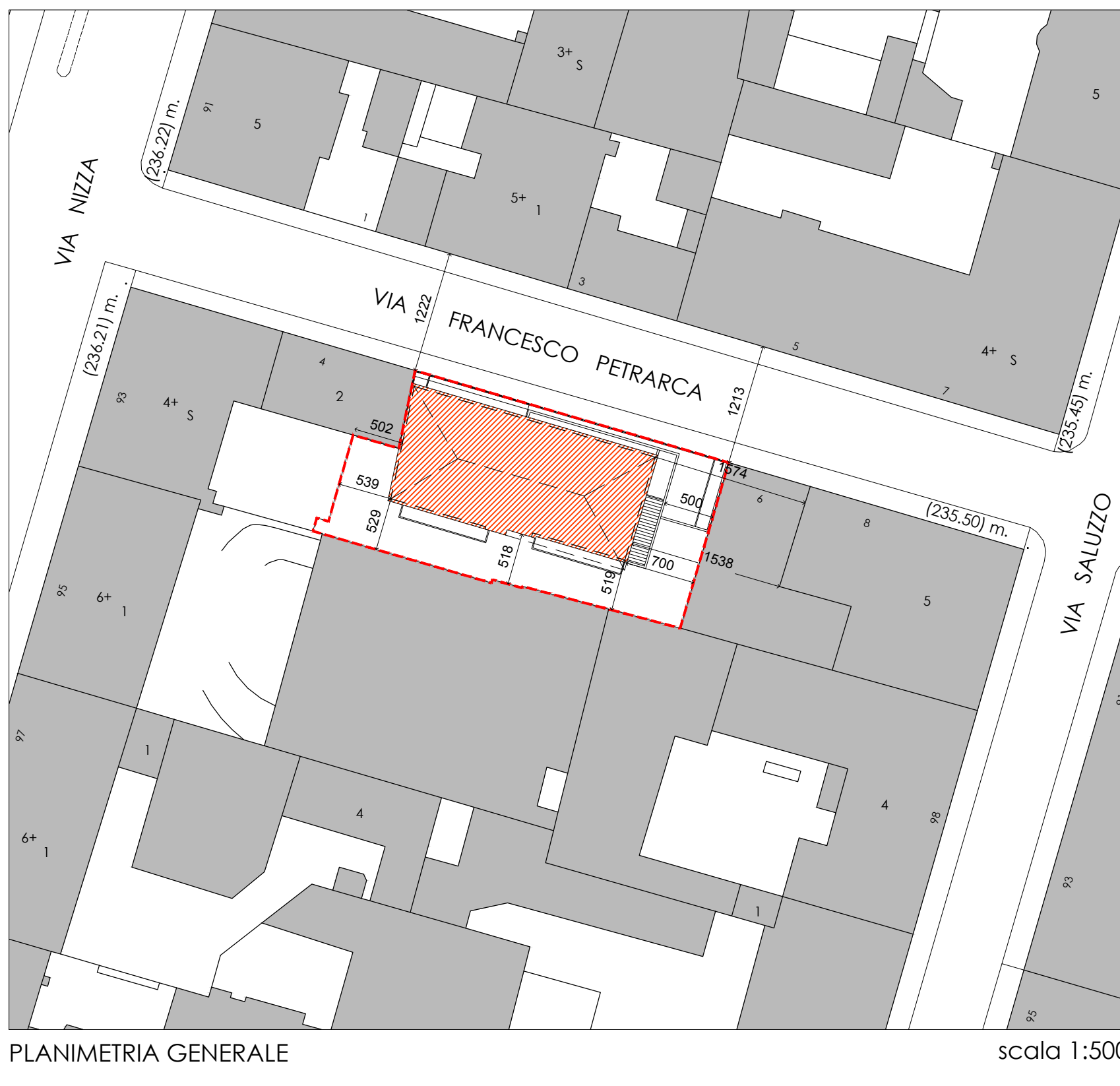
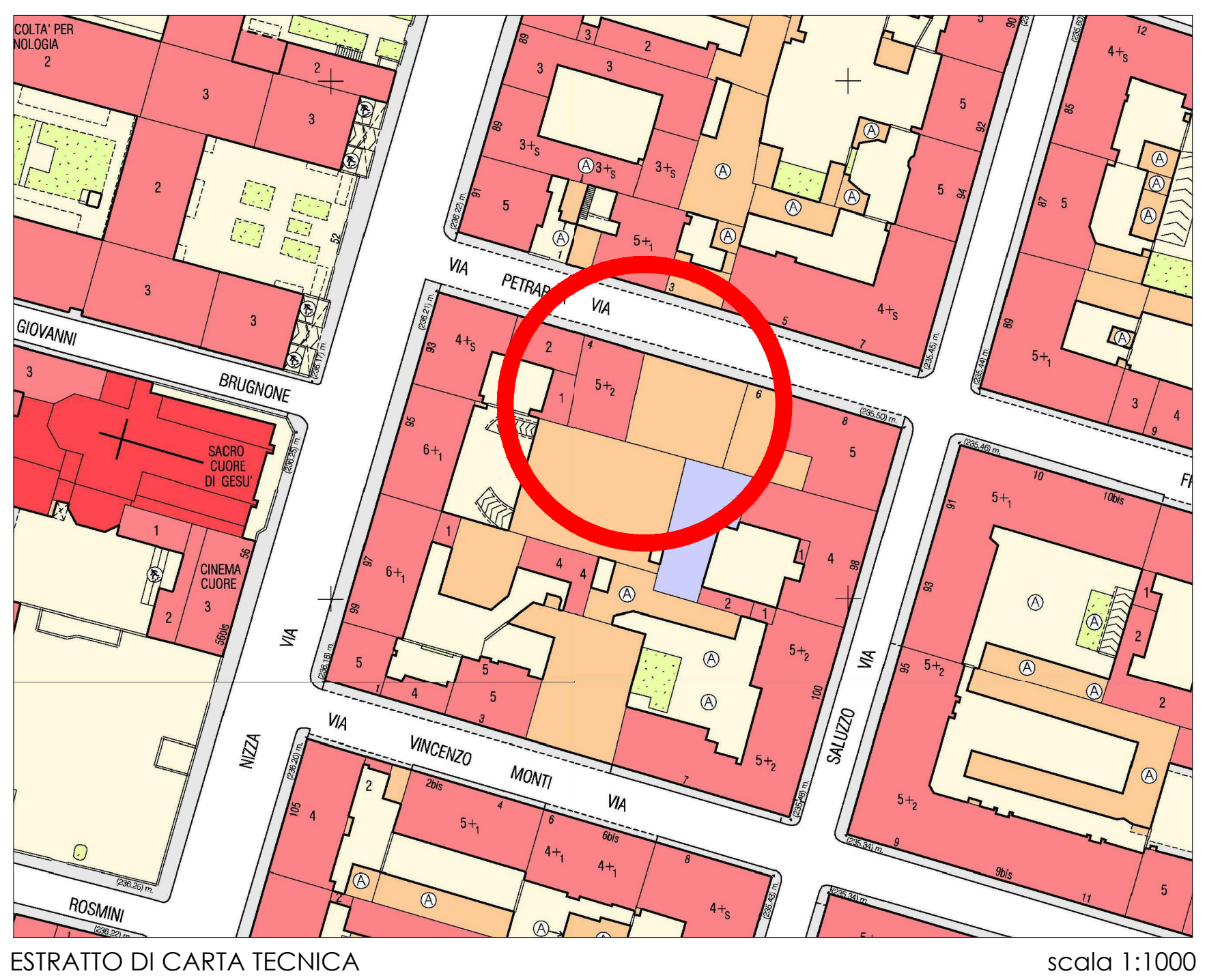
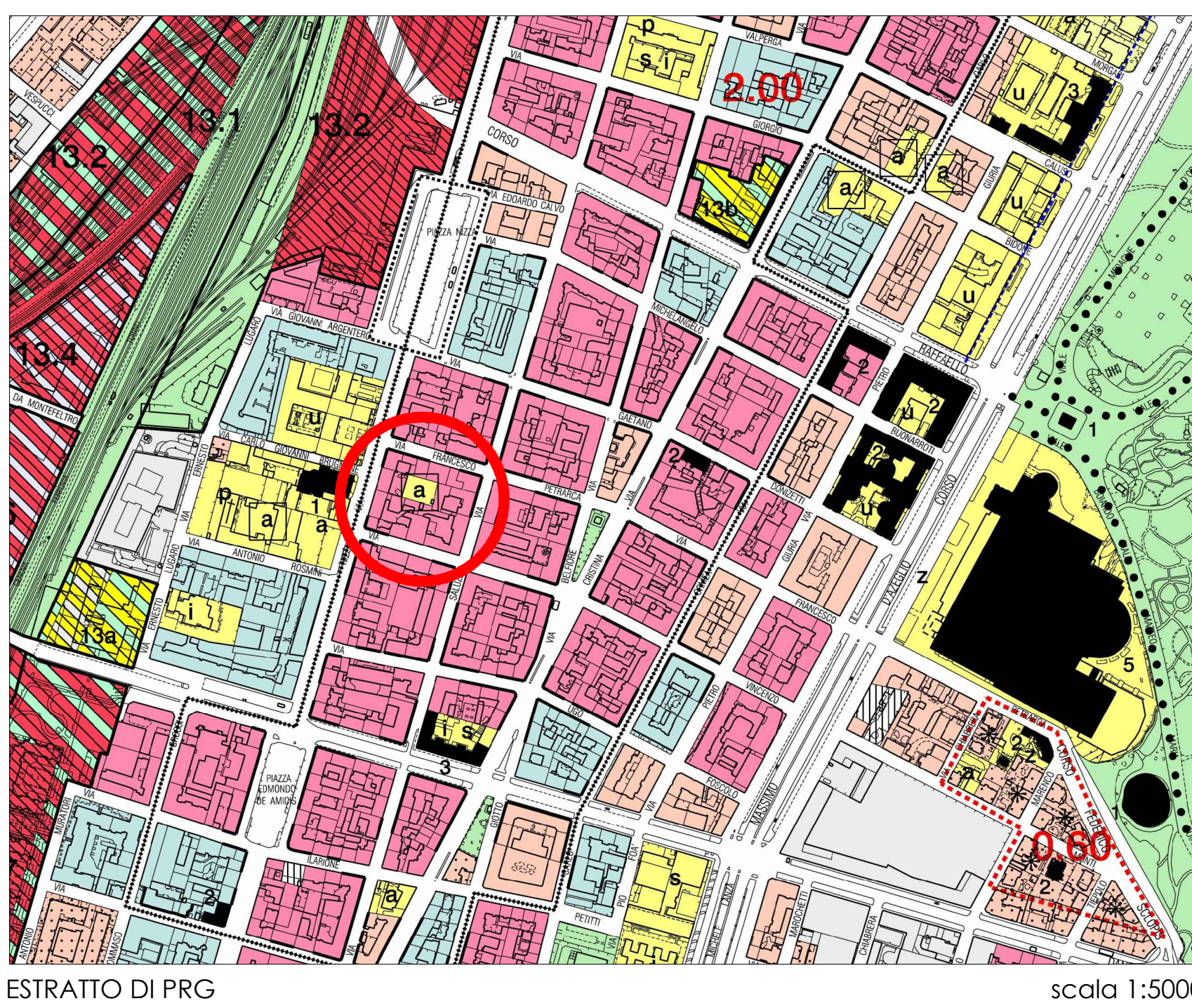
SD  
T1  
U01

1

scala varie  
data 22.02.2013  
oggetto carta tecnica, estratto PRG, dimostrazioni, schema degli interventi, dati generali, confrontanze, planimetria generale, conteggi

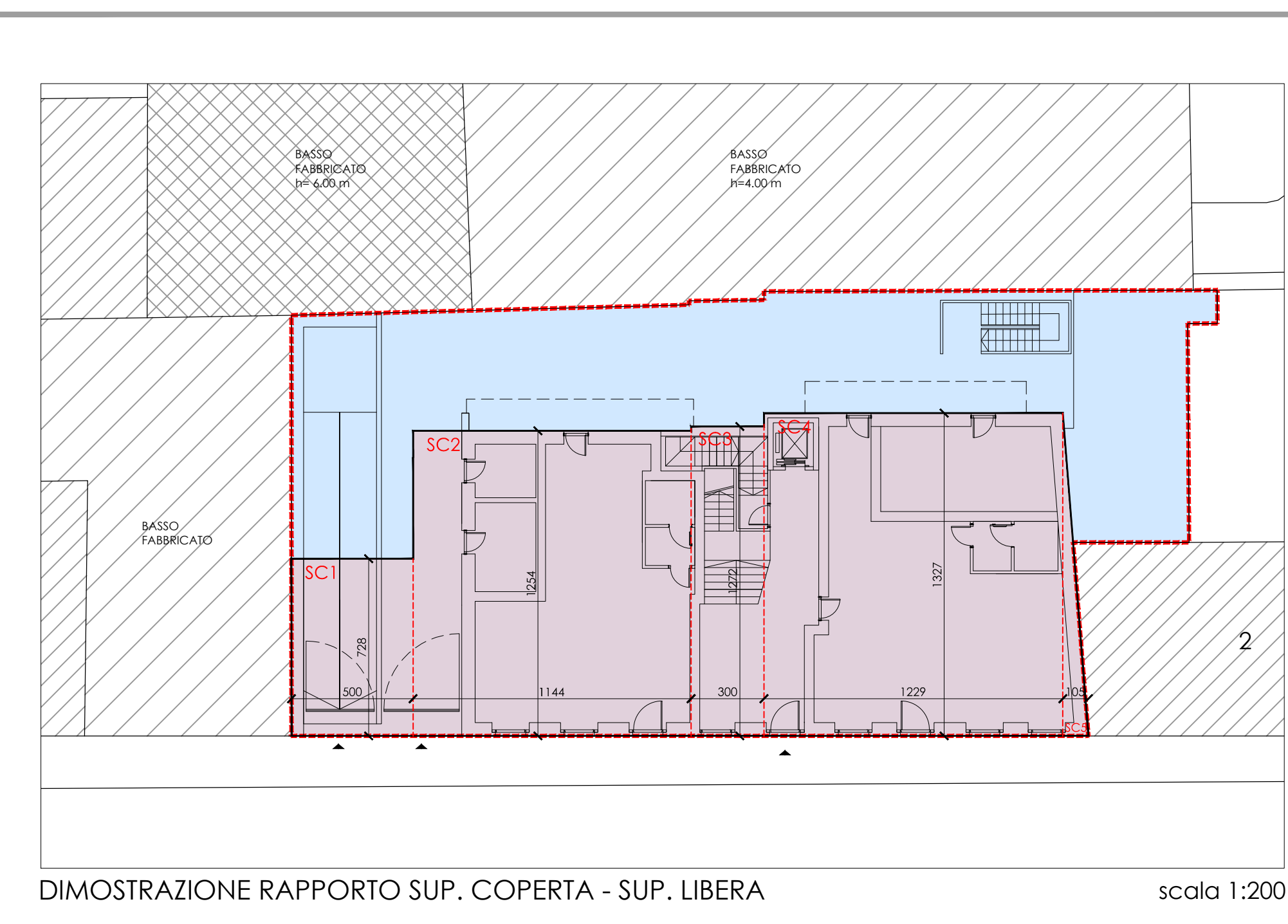
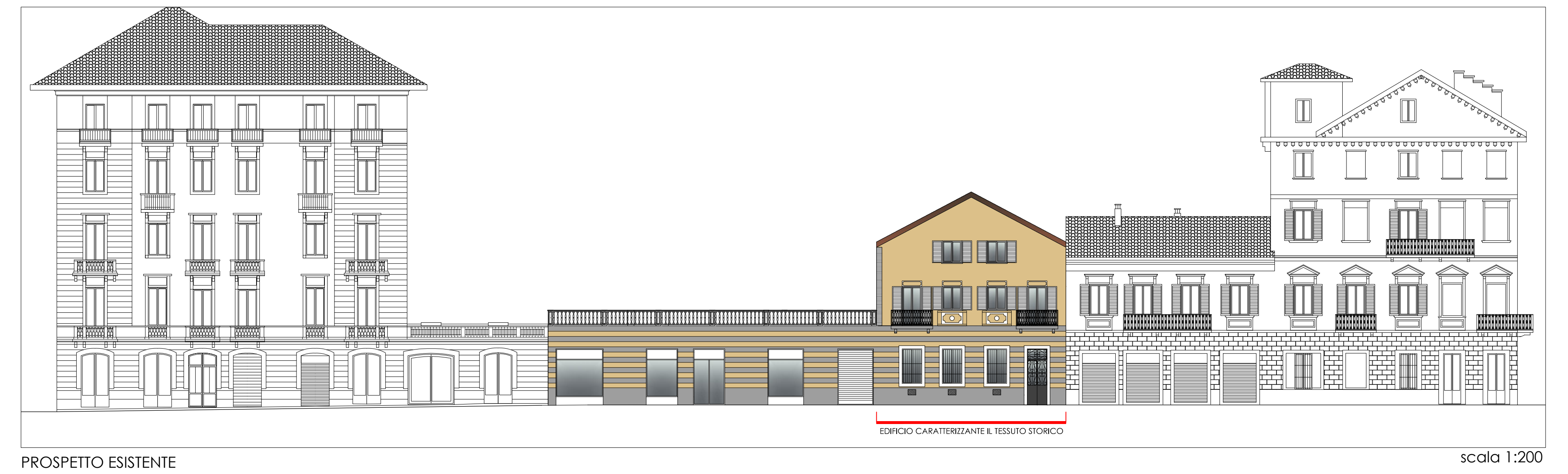
proprietà **Osvaldo Bracco e Antonietta Alessandrini**  
via francesco peirarca n. 4  
10126 torino

progetto **studio 421**  
arch. riccardo olemanni  
arch. simona pont



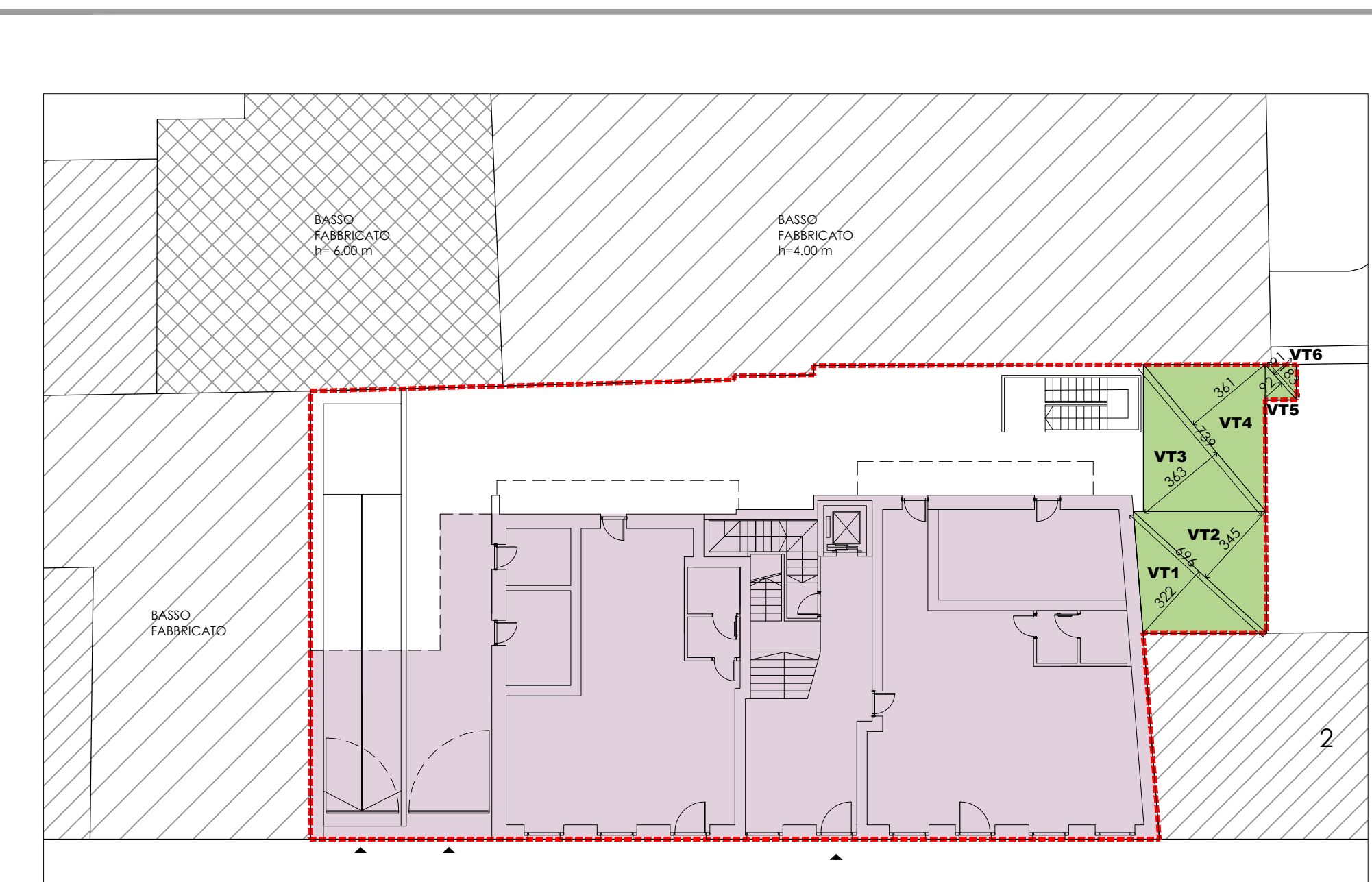
**DATI GENERALI**

AREA NORMATIVA	R3
SUPERFICIE FONDIARIA	mq 627
INDICE DI DENSITA' FONDIARIA	2,00 mq/mq
SLP AMMISSIBILE	mq 1.254
SLP DI PROGETTO	mq 1249,91
VOLUMETRIA DI PROGETTO (1249,91 x 3)	mq 3749,73
UNITA' IMMOBILIARI	n.14
FABBISOGNO PARCHEGGI PERTINENZIALI EX L. N. 122/89 (min mc/m 3749,73/10)	mq 374,97
DOTAZIONE PARCHEGGI PRIVATI	mq 914,66 > 374,97
BOX AUTO	n. 23
SUPERFICIE COPERTA DI PROGETTO	mq 388,07
SUPERFICIE LIBERA DI PROGETTO	mq 238,93
VERDE SU TERRAPIENO (>20% SUP. LIBERA) (mq 238,93x20%)	mq 51,64 > 47,78 mq



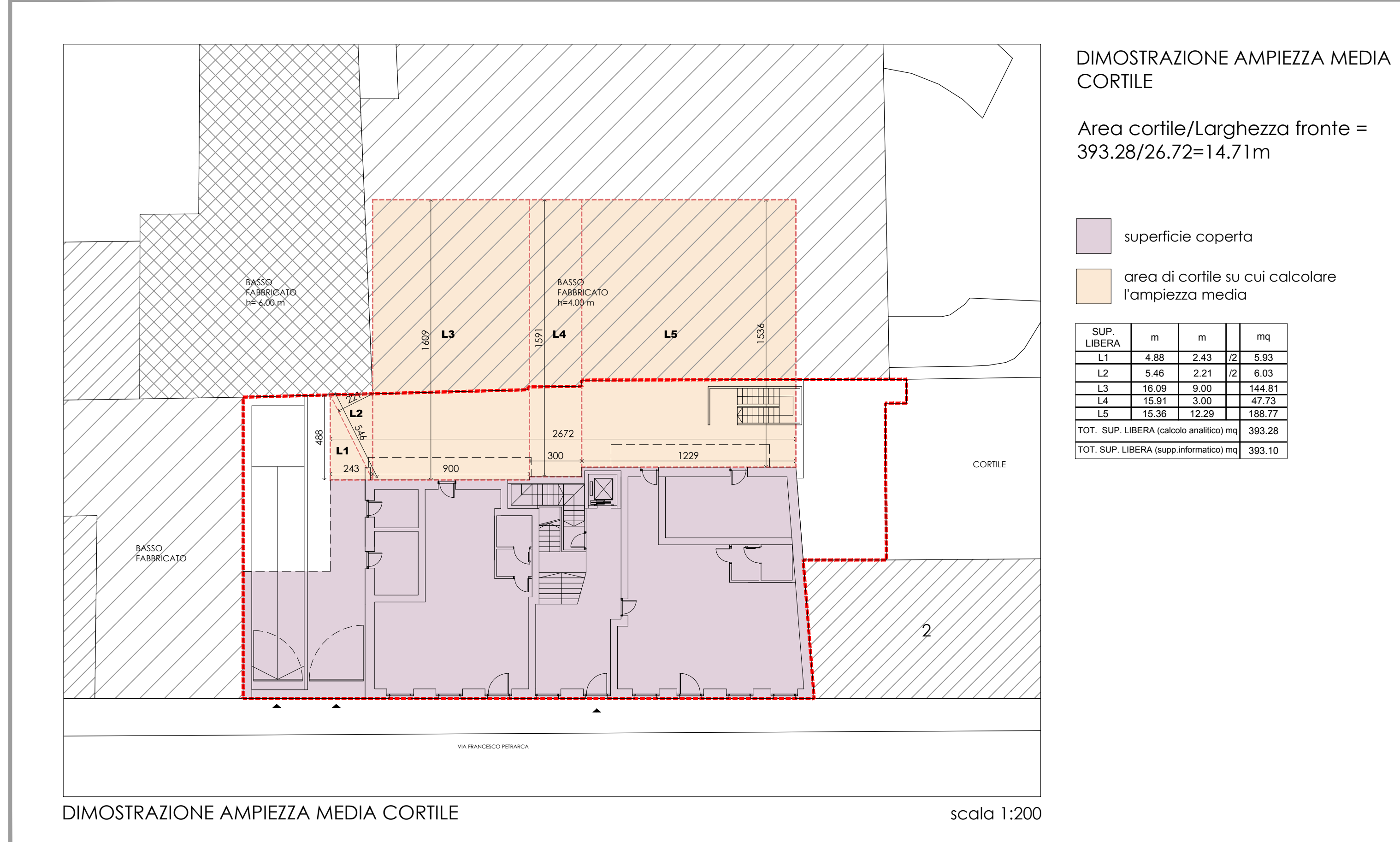
VERIFICA SUP. COPERTA

mq	m	m	mq
SC1	7,28	5,00	36,40
SC2	11,44	12,54	143,48
SC3	3,00	12,72	38,16
SC4	12,29	13,27	163,09
SC5	13,27	1,05	6,97
TOTALE mq			388,07
TOTALE SLP (supp. informato) mq			387,93



VERDE SU TERRAPIENO

mq	m	m	mq
V1	0,88	3,22	11,21
V2	0,90	3,45	12,01
V3	1,20	3,91	13,44
V4	1,20	3,91	13,44
V5	1,20	3,91	13,44
V6	1,20	3,91	13,44
V7	1,20	3,91	13,44
V8	1,20	3,91	13,44
TOT. VERDE (conteggio analitico) mq			61,64
TOT. VERDE (supp. informato) mq			51,90



DIMOSTRAZIONE AMPIEZZA MEDIA CORTILE

Area cortile/Larghezza fronte = 393,28/26,72=14,71m

SUPERFICIE LIBERA DI PROGETTO A CORTILE mq 238,93

AREA TOTALE DI FRONTI AFFACCIATI SU AREA LIBERA mq 868,73

mq 868,73 / 4 < mq 238,93

mq 217,18 < mq 238,93

mq	m	m	mq
L1	4,88	2,43	5,90
L2	5,46	2,21	6,03
L3	10,50	3,00	14,88
L4	10,50	3,00	14,88
L5	13,28	1,22	16,27
L6	13,28	1,22	16,27
TOT. SUPERFICIE LIBERA (supp. informato) mq			303,28
TOT. SUPERFICIE LIBERA (supp. informato) mq			303,10

DIMOSTRAZIONE SLP E SUPERFICIE COPERTA - SCALA 1:200

TABELLA RIASSUNTIVA DIMOSTRAZIONE SLP

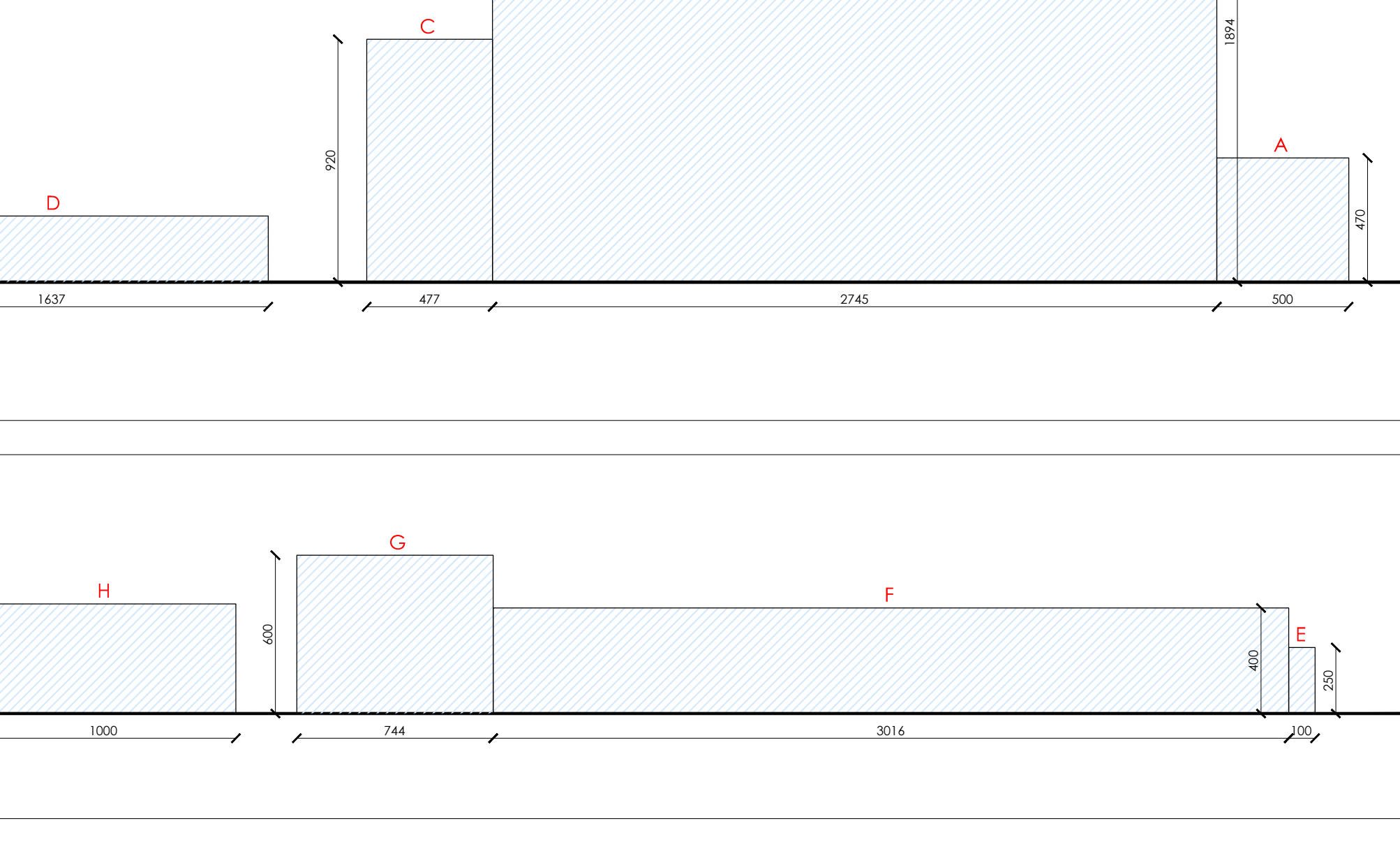
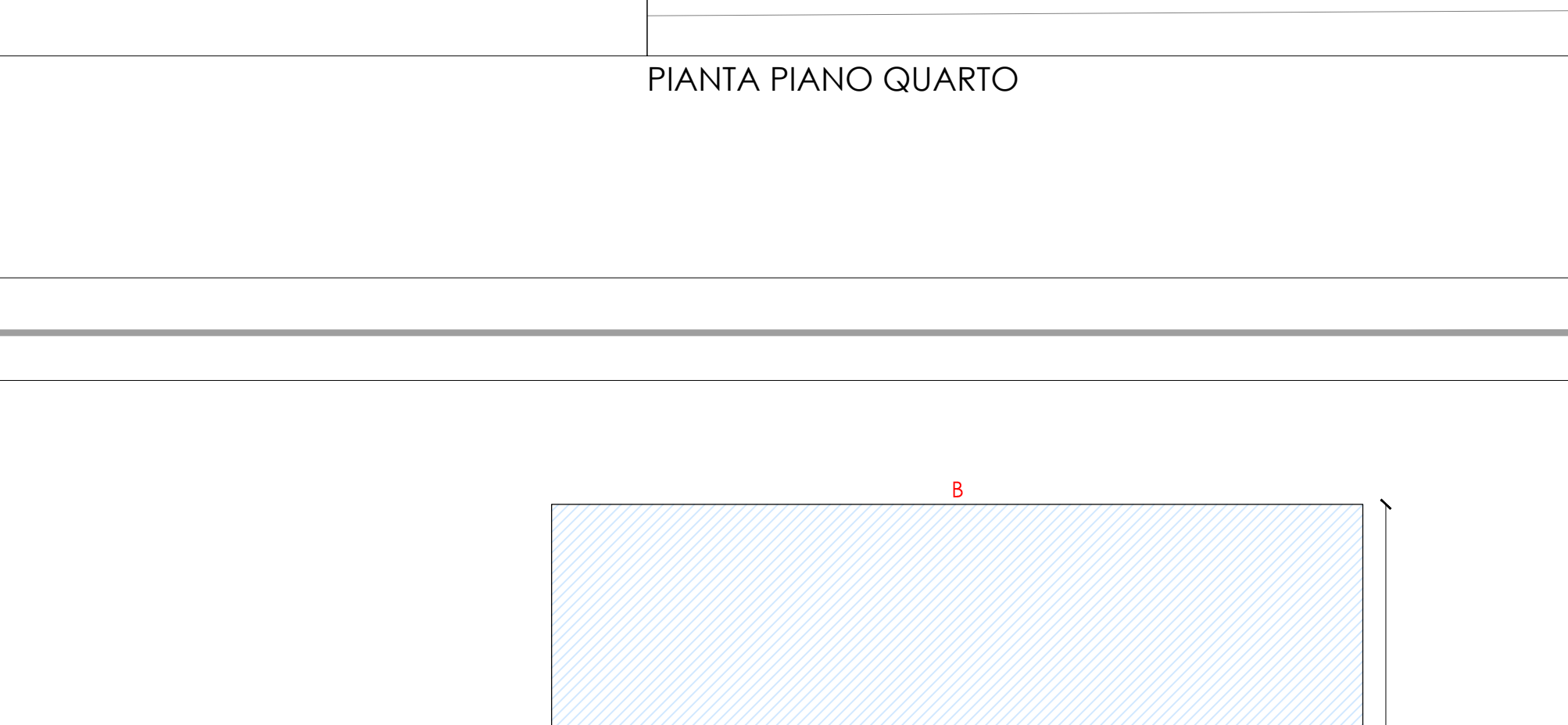
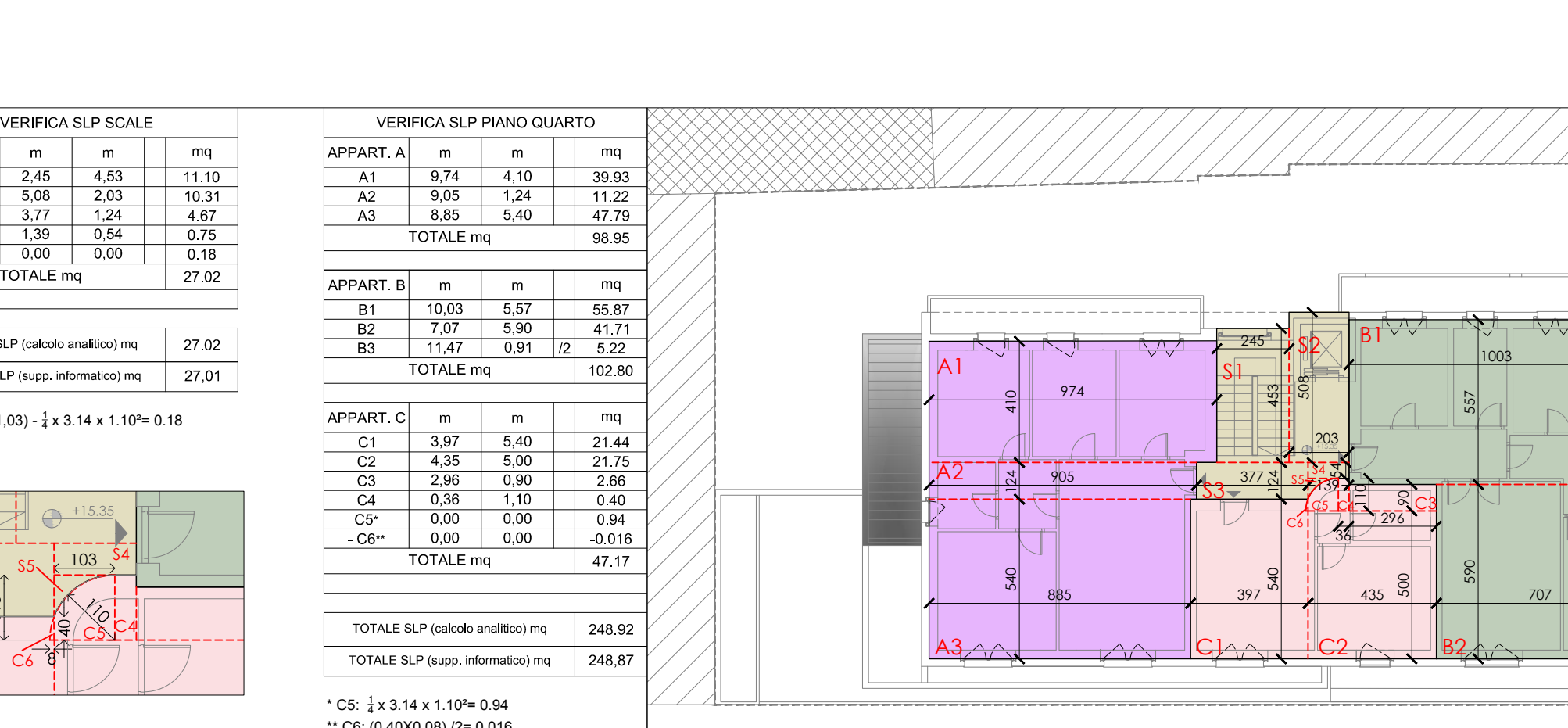
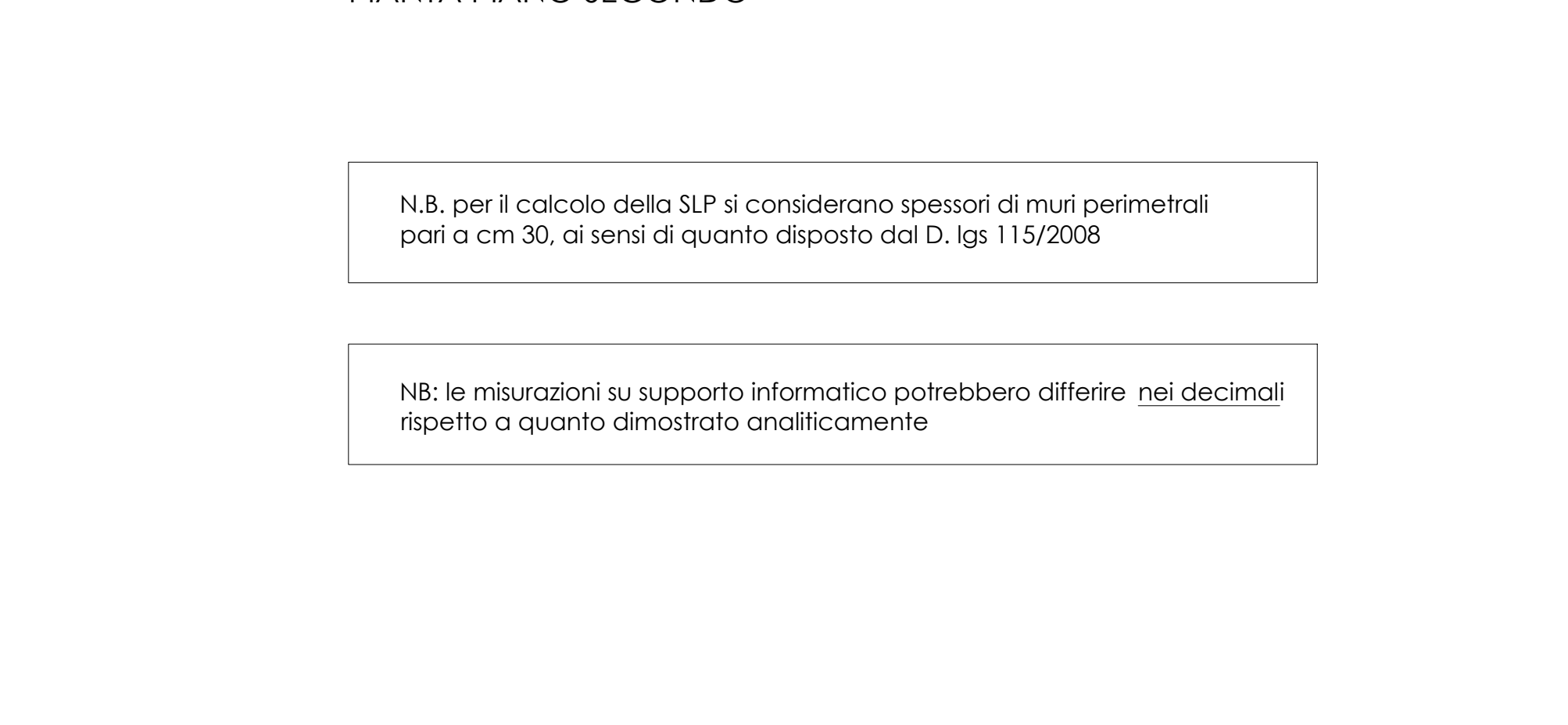
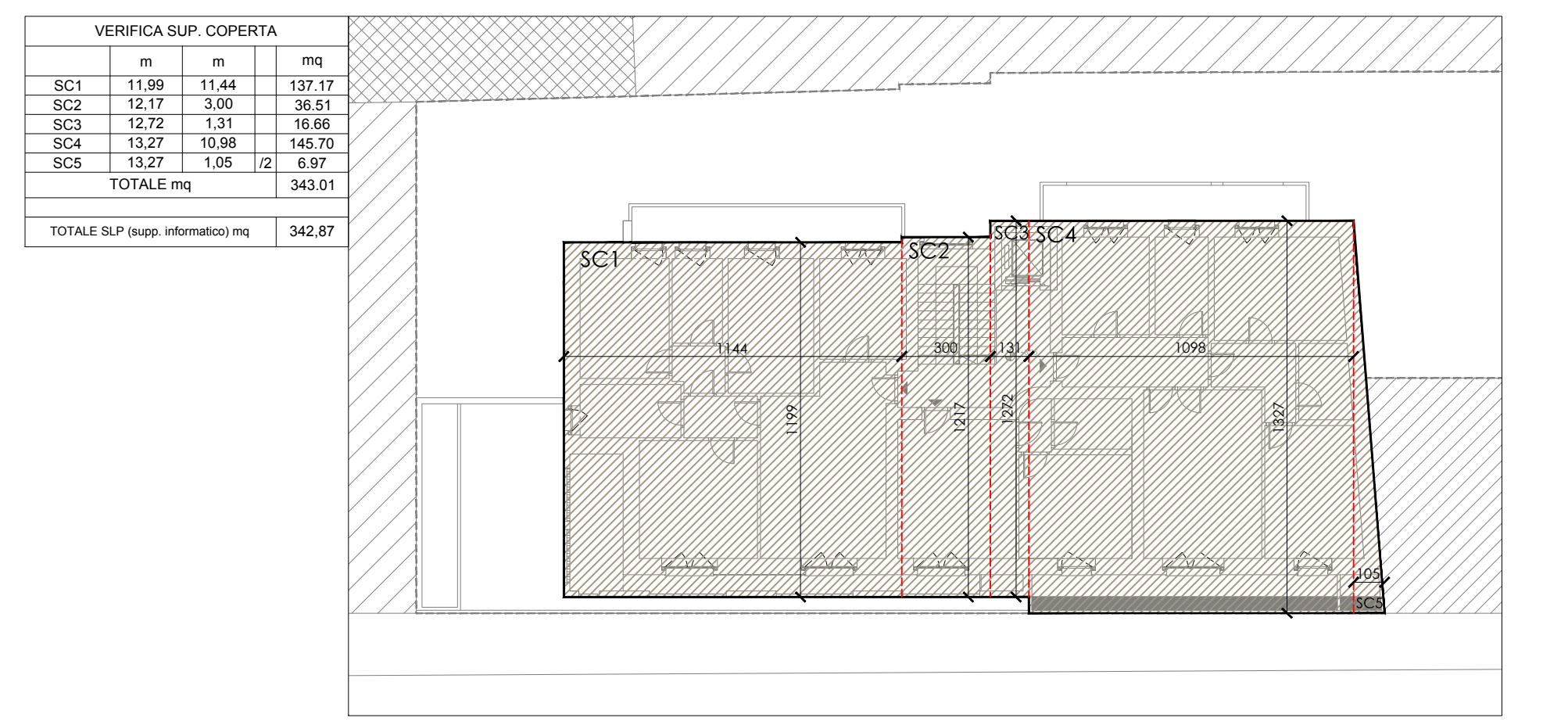
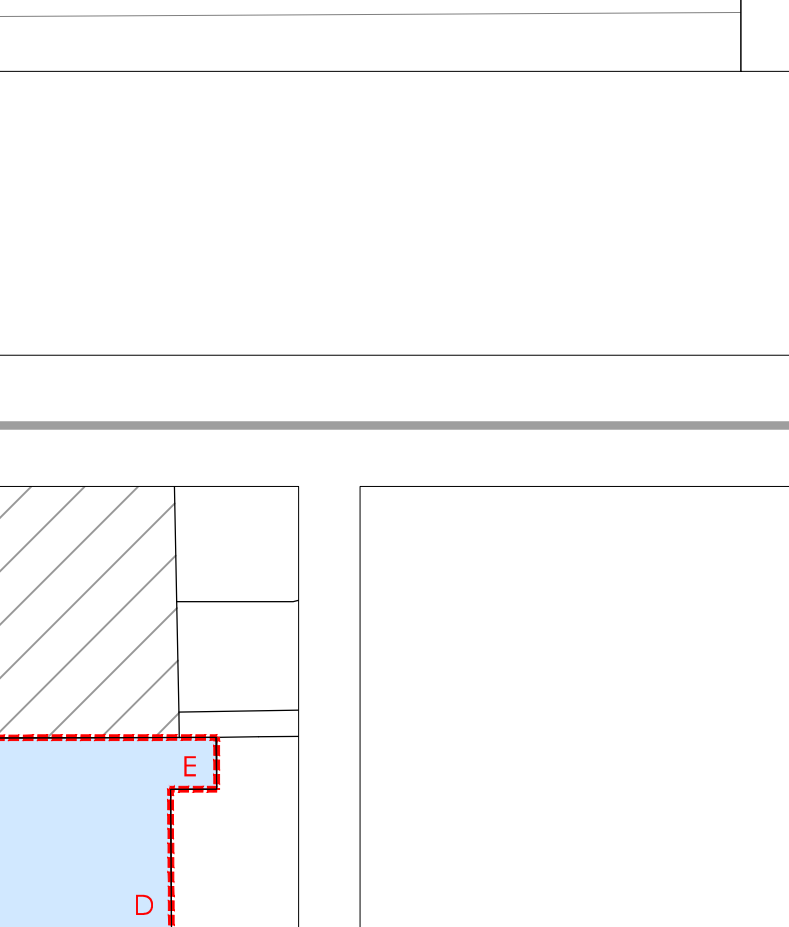
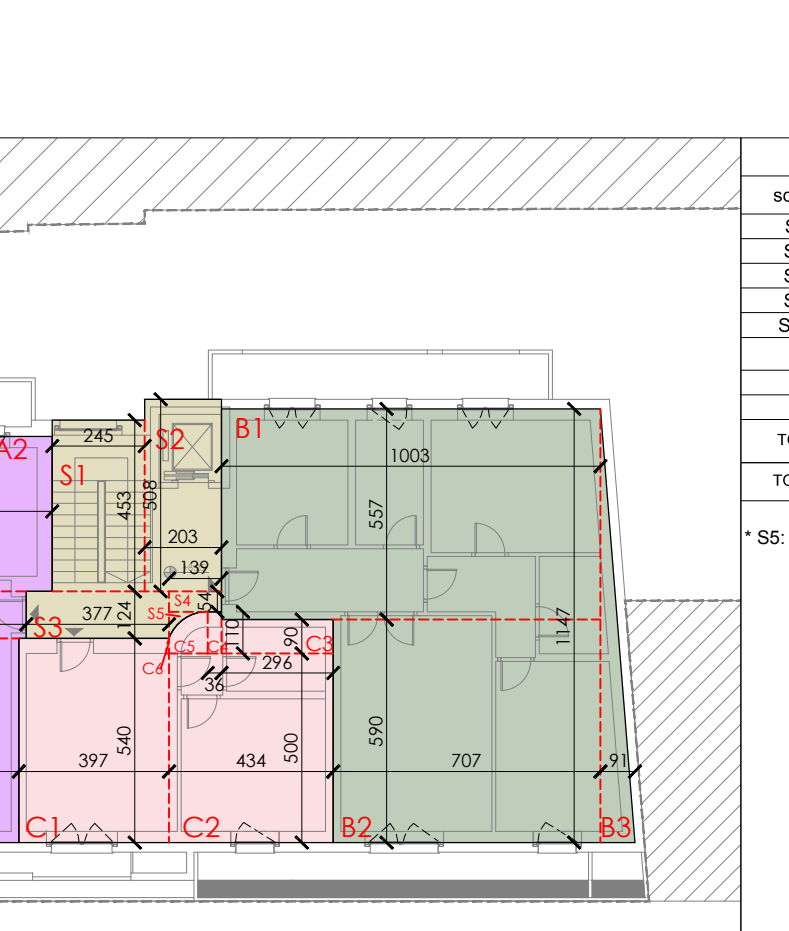
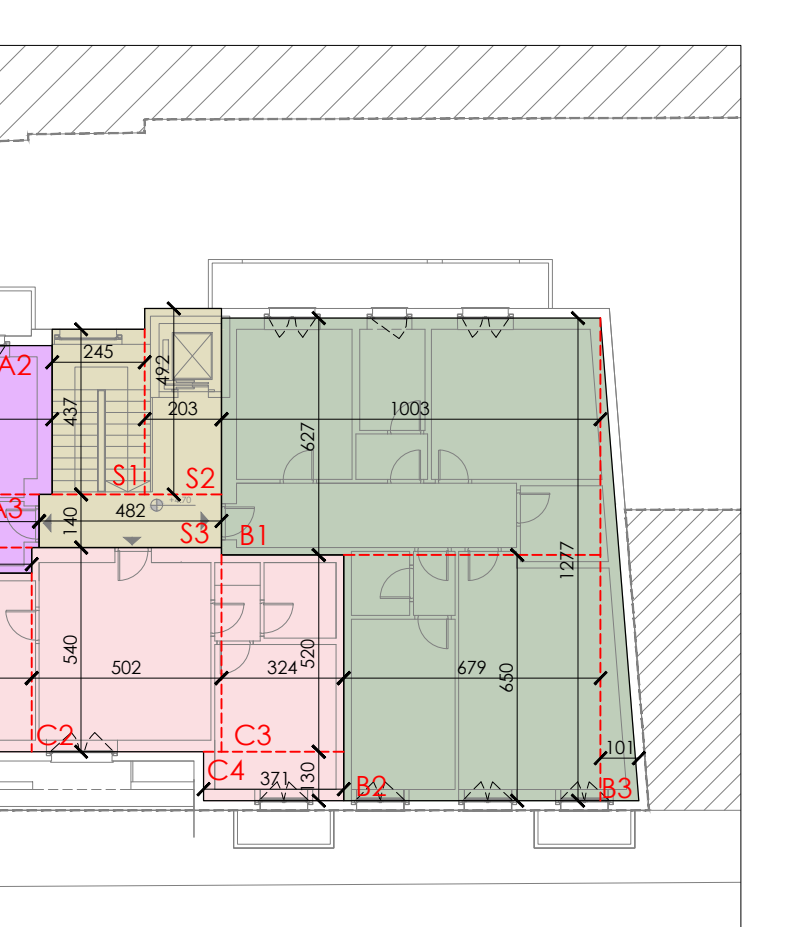
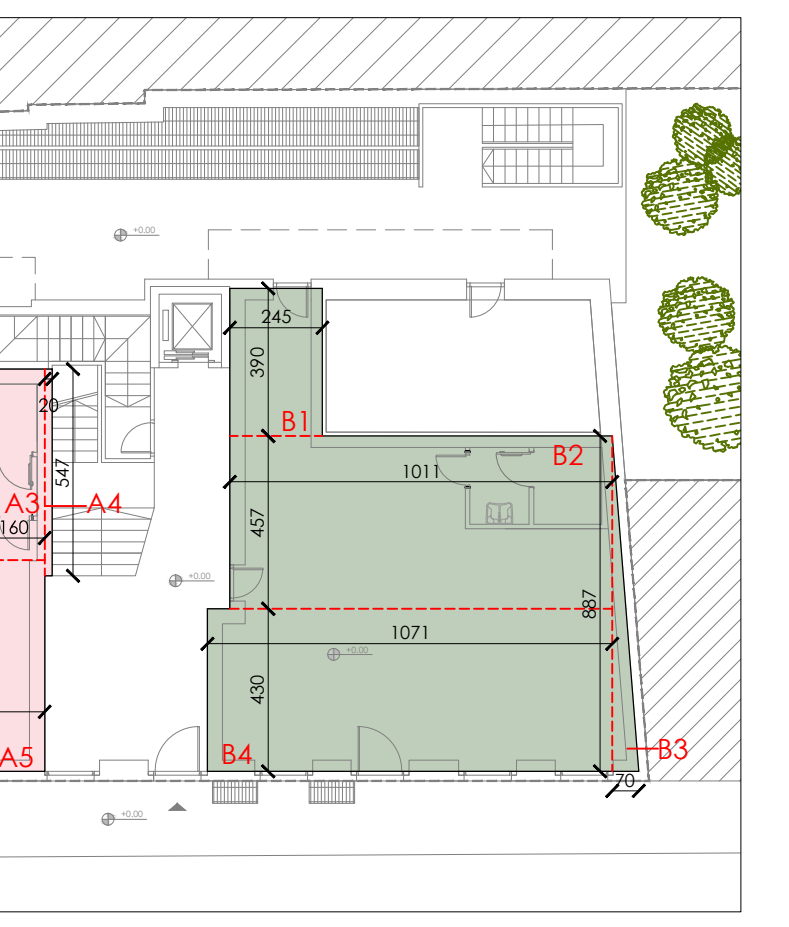
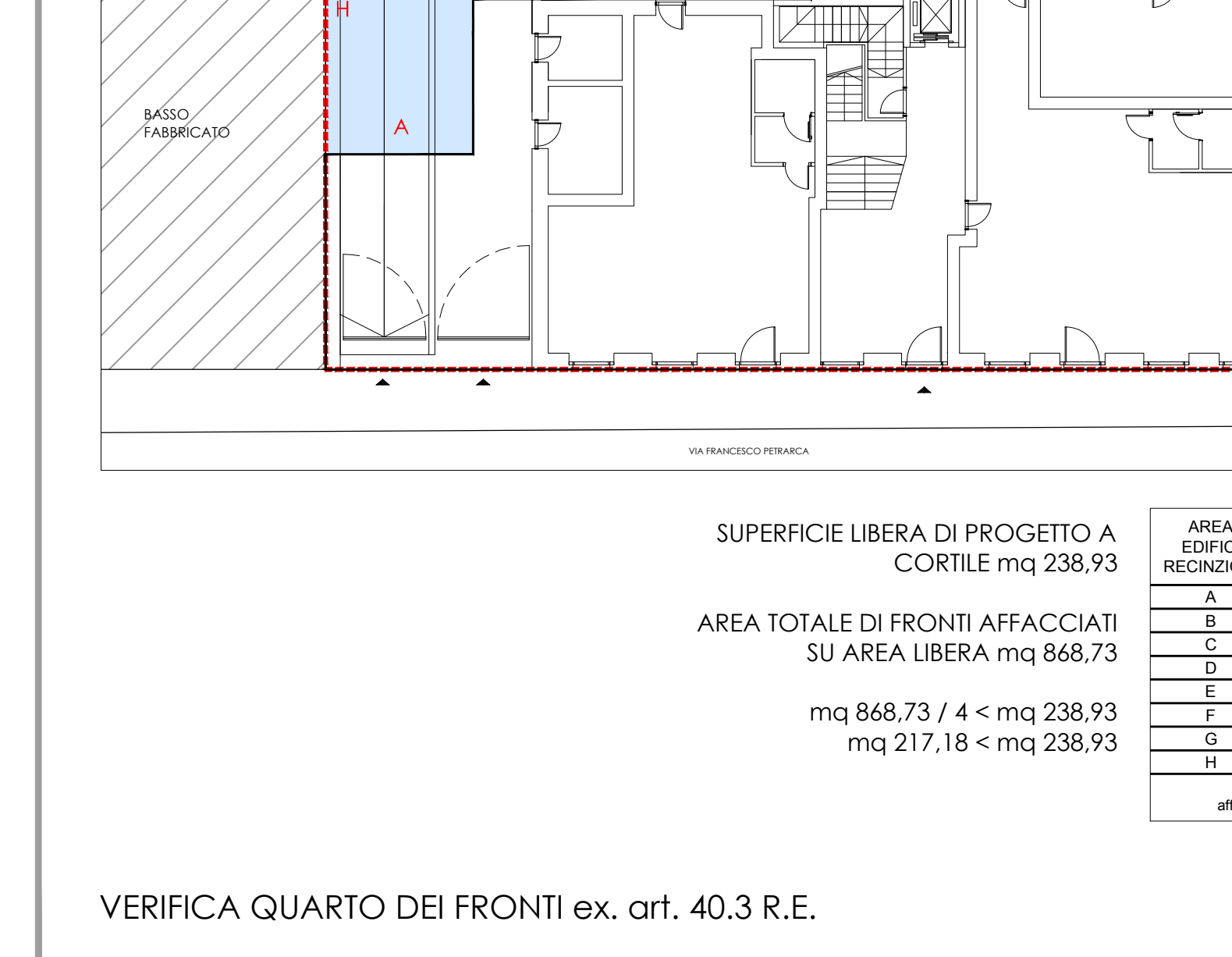
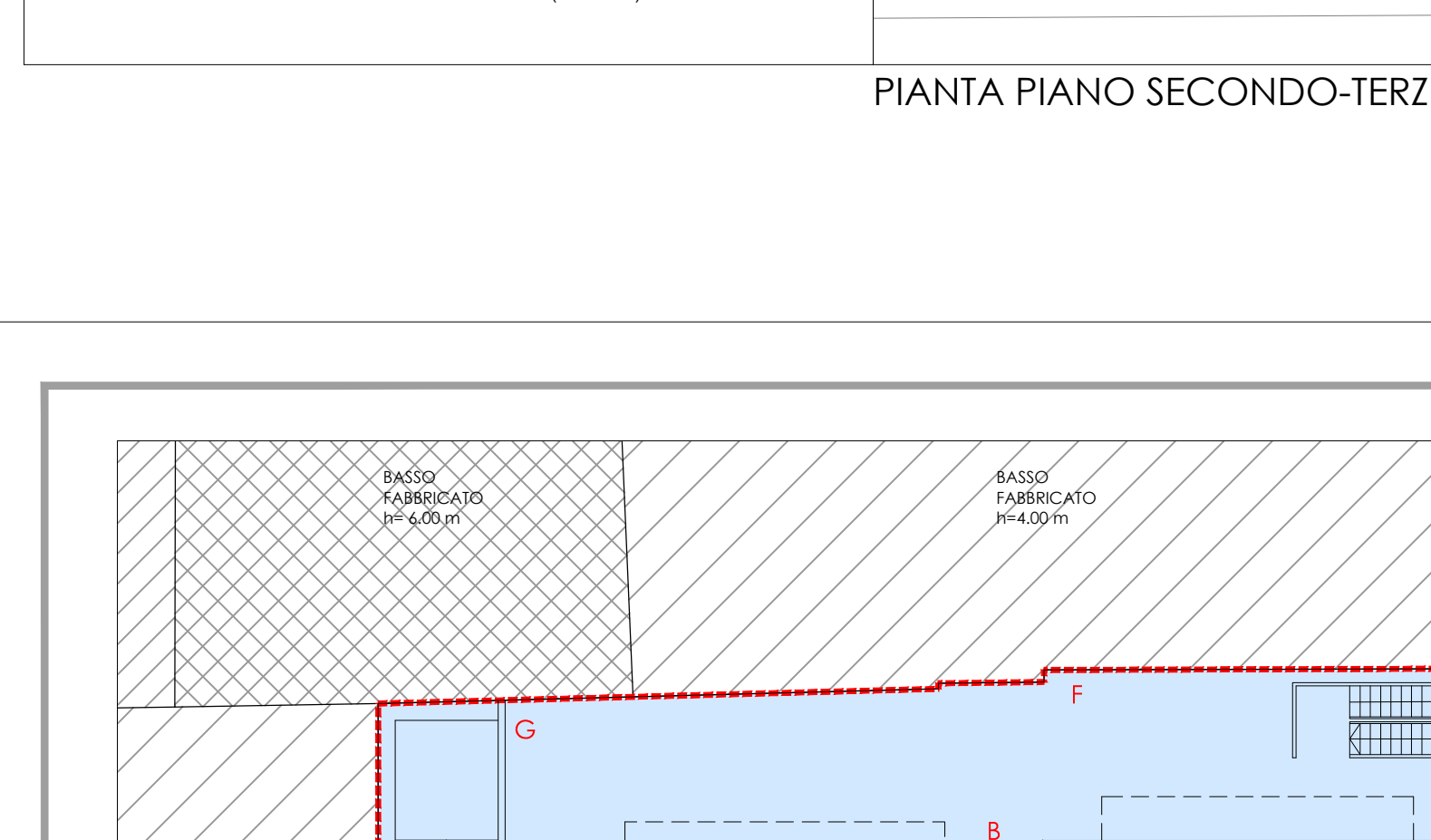
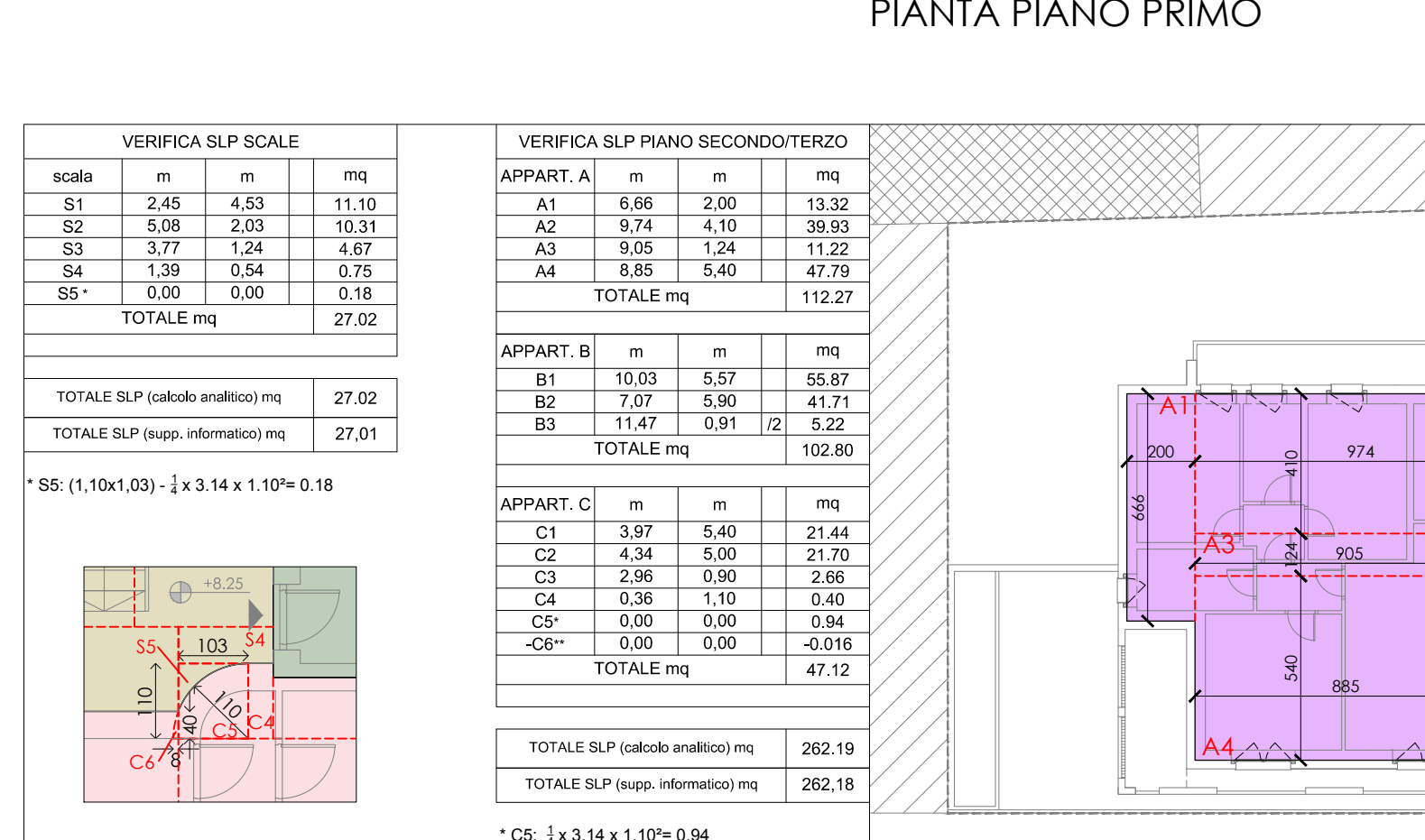
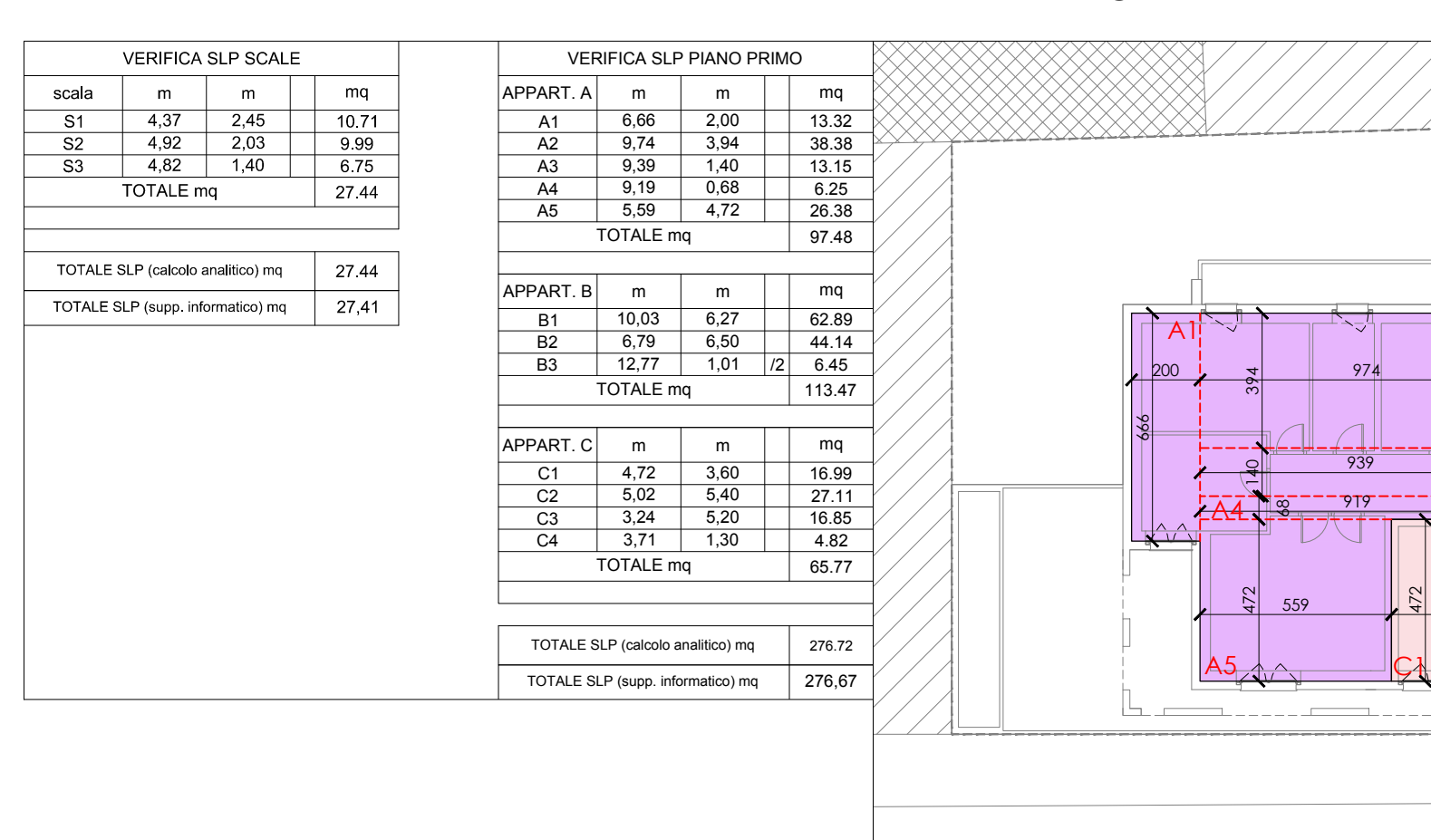
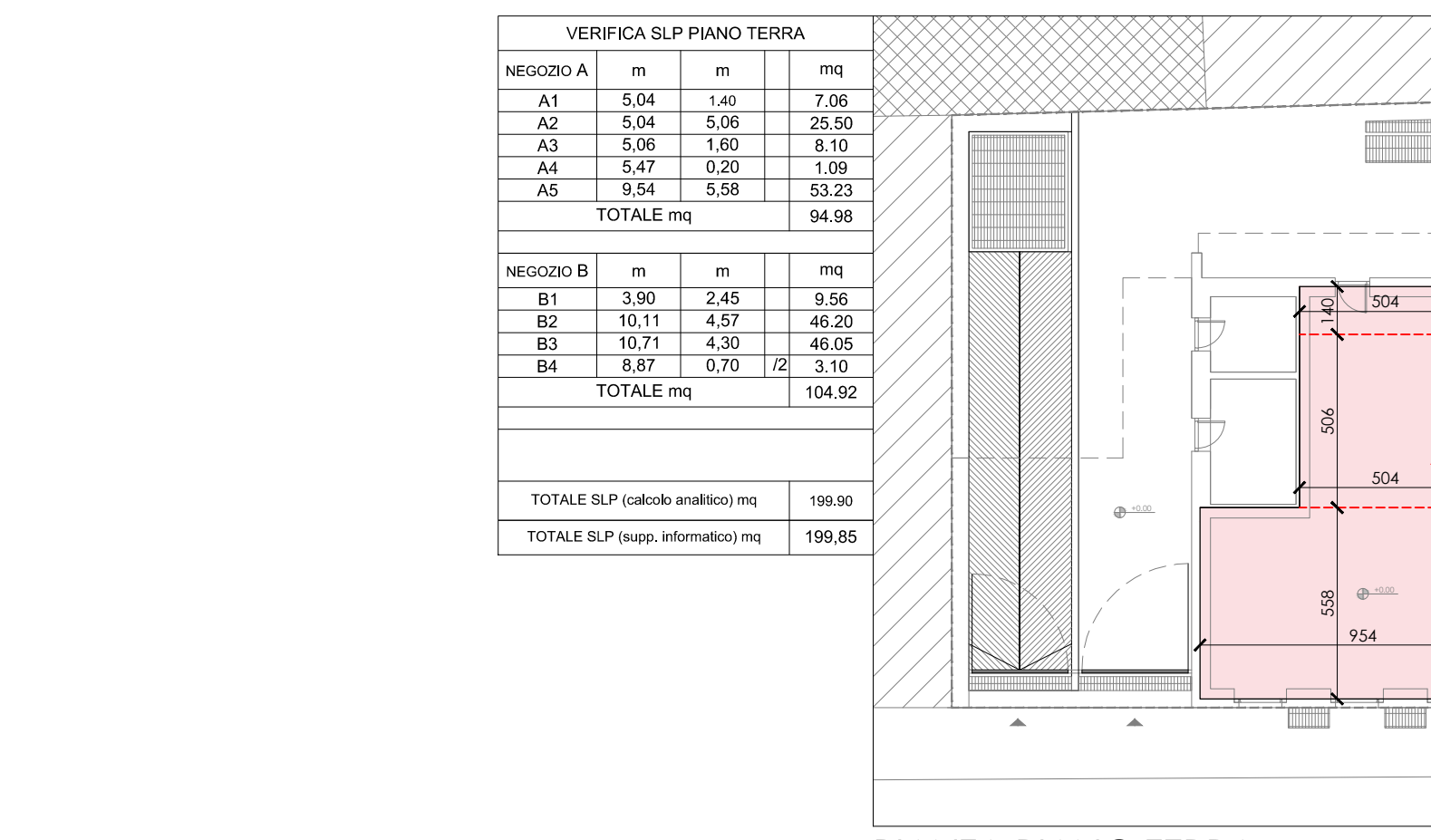
SLP	TOTALE	SCALE	10%	SLP	COBERTA	SALDO	TOTALE
plano terra	199,90			388,07			199,90
plano primo	276,72	27,44	< 10%	343,91			276,72
plano secondo	282,19	27,02	< 10%	343,91			282,19
plano quarto	248,92	27,02	< 10%	343,91			248,92
TOTALE	1048,91			343,91			1048,91

LEGENDA

SLP IN PROGETTO

SLP SCALE

SUPERFICIE COPERTA



N.B. per il calcolo della SLP si considerano spessori di muri perimetrali pari a cm 30, ai sensi di quanto disposto dal D. lgs 115/2008

N.B. le misurazioni su supporto informatico potrebbero differire nei decimali rispetto a quanto dimostrato analiticamente

\* S5 (1,10x1,03) - Lx 3,14 x 1,10x 0,18

\* S6 (1,10x1,03) - Lx 3,14 x 1,10x 0,18

\* C6 (1,10x1,03) - Lx 3,14 x 1,10x 0,18

\* C6 (1,10x1,03) - Lx 3,14 x 1,10x 0,18